



Friends of King Edward Mine

Newsletter

Issue 6 April 2009

Chairman's Report

Dear Friends,

We are coming to the end of a second very successful year where we have provided much needed support for KEM. I look forward to seeing you on the 20th of April at the AGM where we will be seeking approval for an amendment to the constitution, details of which you should have already received. Also approaching is the KEM. Open Day on Sunday the 26th of April. So if you can't make the AGM I hope to see you there.

I would like to take this opportunity to thank you for your support over the past year and hope for your continued support in the coming year.

Steve Polglase

Annual General Meeting: -

A reminder that this year's AGM is to be held at KEM on Monday the 20th April in the Survey Office starting at 19:30. The papers have already been distributed. They included the case for amending the approved constitution to incorporate Great Condurrow mine. I can only echo the Committee's recommendation that this suggested amendment be accepted.



Great Condurrow circa 1950

For those members who do not know the site the photos of Great Condurrow in the 1950's and recently show the site above ground. For those who can recall the early Poldark television series, then you will remember how the mine appears underground.



Great Condurrow 2009

Fact Sheet 1: -

As trailed at the end of Newsletter 5, accompanying this Newsletter is the first of what should become a regular issue of Fact Sheets. It is the aim of these to give information on the history and workings of the various items of interest at KEM. The first Fact Sheet deals with the Holman laboratory sized shaking table, a unique piece of historical machinery, purely because it was being renovated at the time the idea of a fact Sheet first surfaced. The second Fact Sheet 'Observations on Mineral Processing', is in draft form at the moment and will deal with an introduction to this vast subject.

King Edward Mine, Camborne, Cornwall

www.kingedwardmine.co.uk

Page 1 of 3



Friends of King Edward Mine
Newsletter
Issue 6 April 2009

It is intended that the Holman laboratory table, together with other small-scale apparatus being restored will be sited in a relatively quiet corner of the Mill. It is the intention that this rare table will eventually form part of a 'hands on' and more educationally orientated, visual demonstration of some of the fundamental principles of mineral processing, thus extending the interest and range of the activities at KEM. All being well this corner should be up and running in time for this year's Open Day.

Finances: -

Newsletter 5 gave details of the donation of £500 to KEM, which was given to aid works to implement the planning permission for the temporary building to be erected to protect the historic Holman horizontal steam winding engine.

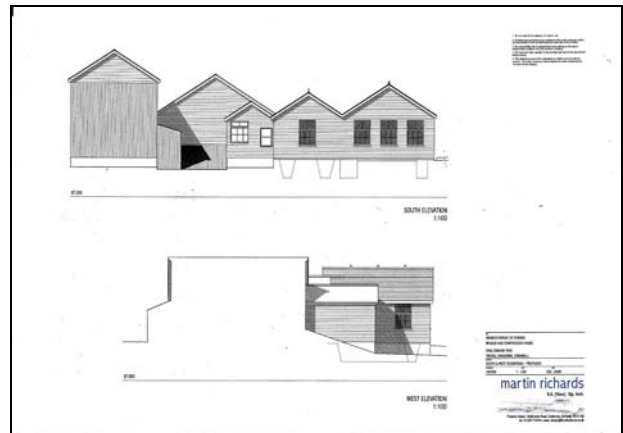


Holman horizontal steam winding engine.

New applications for planning and listed building consent have been submitted to Kerrier District Council for the reinstatement of the former winder/compressor building.



This is for a permanent building to echo the original, which was burnt down in 1957. (photo in Newsletter 5) Of course, Friends have written to the Council strongly supporting these applications. It would clearly be preferable if a permanent purpose built building could be erected, obviating the necessity for a temporary one. Even better if this was to be in the near future. The Friends donation will be available for use either in connection with the temporary building, or a permanent one.





Friends of King Edward Mine Newsletter Issue 6 April 2009

Friends also paid for the new Perspex cover to the model of a man engine in the museum. The cost of this cover was £169-05 and a cheque for this amount has been given to KEM. The donation was featured in the local press, with a reasonable article in the 'West Briton' 5th February 2009.



The model man-engine

Unfortunately when supplying information to the press about man engine's the secretary transposed the timing of the introduction of one rod and two rod man engines. This has led to discussion, which fortunately supplied further details about this model. It was made by Dicon Nance, and was an early model by this model maker, it had been displayed previously in the Holman Museum, where there had been a small plaque giving Dicon's name. This plaque now seems to have disappeared. Dicon also made models for the Truro Museum.

Open Day 2009: -

This year's Open Day will be on Sunday 26th April, the day after Trevithick Day in Camborne. For those members 'upcountry' I can heartily recommend a weekend, or longer, in the Far West to enjoy both of these fascinating events. All the equipment at KEM

will be operating during the day, the Lanner and District Silver Band will be playing, there is a return for the Hevva Dancers and for the Ingleheart Singers, who sung at Smokin' Chimneys last summer, there will be visiting exhibitors, and Friends will again have a stall. If you can come along, please drop by and say hello. We aim, this year, to be at a greater distance from the band!

International Mining History Conference: -

The 8th International Mining History Conference is due to take place in Redruth on the weekend of 12 – 15th June. As part of this a visit to KEM for the delegates is scheduled for the Saturday evening.



New sign erected Feb 2009

Let's hope that the weather that evening will be as fine as that for last year's Smokin' Chimneys. Details of this conference can be found on the website

www.huss.exeter.ac.uk/history/imhc/index.htm

Annual Subscriptions: -

Finally the unpleasant task of reminding members that the subscriptions fall due at the beginning of April.

Newsletter Co-ordinator – John Beale

King Edward Mine, Camborne, Cornwall

www.kingedwardmine.co.uk